

TECHNICAL RIDER

“HULK”

THIS TECHNICAL RIDER IS AN INTEGRAL PART OF THE CONTRACT BETWEEN THE ORGANISER AND THE COMPANY. CHANGES NEED TO BE DISCUSSED EXPLICITLY WITH THE COMPANY.

CONTACT

– Direction: Diederik Peeters

diederik@spinspin.be +32 486 36 36 20

– Sound: Lieven Dousselaere

l.dousse@gmail.com +32 486 85 95 95

– Light: Henri-Emmanuel Doublier

henri-emmanuel.doublier@wanadoo.fr +33 662 873 074

– Production & Tourmanagement: Ingrid Vranken

ingrid@spinspin.be +32 494 61 62 39

SCHEDULE

4 house-technicians for set up and strike (2 lights, 1 sound, 1 stage)

1 house-technician for focusing and cue-recording

- Day 1 (set-up): 2 shifts of 4 hours with 4 house-technicians + 1 shift of 4 hours with 1 house-technician (rehearsal in the evening)

- Day 2 (performance 1): 1 shift of 4 hours with 2 house-technicians + 2 shifts of 3 hours with 1 house-technician (rehearsal in the afternoon) + SHOW 1

- Day 3 (performance 2): 1 house-technician stand-by (rehearsal in the afternoon) + SHOW 2 + strike

If possible we prefer to do the strike the morning after the last show – strike takes 2 hours with 3 or 4 house-technicians.

The duration of the performance is approximately 54 minutes 33 seconds. Audience is not allowed to enter after the show has started.

STAGE

Minimum dimensions of the stage are 8m50 wide x 7m deep. Please install black dance-floor. We will remove 3 bands of 1,5m width upon arrival.

COMMUNICATION

Before the show, evening-programs should be handed out to the audience. These programs should be provided by the organiser. The program should mention credits and short text about the piece, that can be found here: <http://spinspin.be/proj.php?id=182&cat=45&title=HULK>. During the show the audience will be asked to tear the program into little pieces.

DRESSING ROOM

- 1 heated dressing room with a table, chairs, a mirror, a shower, towels and coat hangers.
- hot and cold drinks, some fruit and some snacks.
- drinking water, 1 bottle of white wine and 1 bottle of red wine.

SET

Company brings:

- several plastic walls metal structures used to put up plastic walls
- 3 rolls of dance-carpet, metal structure, rope & pulley blocks to attach carpet to ceiling
- 1 wooden stool
- 1 life-size doll
- props

To be provided by the organiser:

- black curtains to make a black-box (both sides and back-wall)
- 4 chairs, 1 table and 1 plastic bucket to be used backstage (behind curtain)

Picture below shows set as installed for the première in Beursschouwburg, Brussels. The placement will be adjusted to each space individually.



SOUND

Company brings:

- 2 x DPA Head-Set Microphone

- 2 x Sennheiser EW100 G3 Wireless Sender & Receiver
- 1 x stereo compressor (FMR RNC)
- 2 insert cables
- patchcables
- laptop
- Edirol FA-101 soundcard
- Novation Launchpad
- Korg Nanokontrol

To be provided by organiser:

- 2 x 1m table (for laptop + controllers + mixing desk + outboard)
- 2 x lamp
- see below for mixer, outboard and P.A.

P.A.

A PA system sufficient to the venue, capable of producing an overall equally sounding, undistorted sound (110dB). Sub speaker(s) needed!

The system must be ready to operate without buzz and bugs, 1 hour before soundcheck. The FOH boot shall never be placed against a wall or under a balcony and always in a central focal point.

Compact *Analog* desk with minimum 6 input channels (mackie 1604 v1z pro, ...), 3 post-fader AUX, and 2 post insert direct outs. (For this show the sound-designer is doing a lot of live sample manipulation and vocal processing and needs immediate hands-on access to the EQ's of the individual tracks as well as the graphical EQ's on both monitor and FOH. To do this on digital desks requires additional button pushing / delving into menus.)

The outboard should contain:

- 31 bands graphic stereo EQ inserted over the L&R output (Klark Teknik, BSS)
- 31 bands graphic EQ inserted over the AUX 1 output (Klark Teknik, BSS)
- 3 active monitors / 3 separate aux sends
- One friendly and experienced technician, familiar with the PA system.

Input list

	input	insert	routing
CH01	Wireless mic Diederik	Comp CH1	Direct out to laptop input 1
CH02	Wireless mic Nada	Comp CH2	Direct out to laptop input 2
CH03	Laptop 1 (L)		Main out L, AUX 1 => monitor 1, stage-left (cour) down-stage
CH04	Laptop 2 (R)		Main out R, AUX 1
CH05	Laptop 3		AUX 2 => monitor 2, stage-right (jardin) mid-stage

CH06	Laptop 4		AUX 3 => monitor 3, stage-left (cour), up-stage
AUX 1		31 bands graphic EQ	(Post fader) monitor 1, stage-left (cour) down-stage
AUX 2			(Post fader) monitor 2, stage-right (jardin) mid-stage
AUX 3			(Post fader) monitor 3, stage-left (cour), up-stage
MASTER		31 bands graphic stereo EQ	

LIGHT

Company brings:

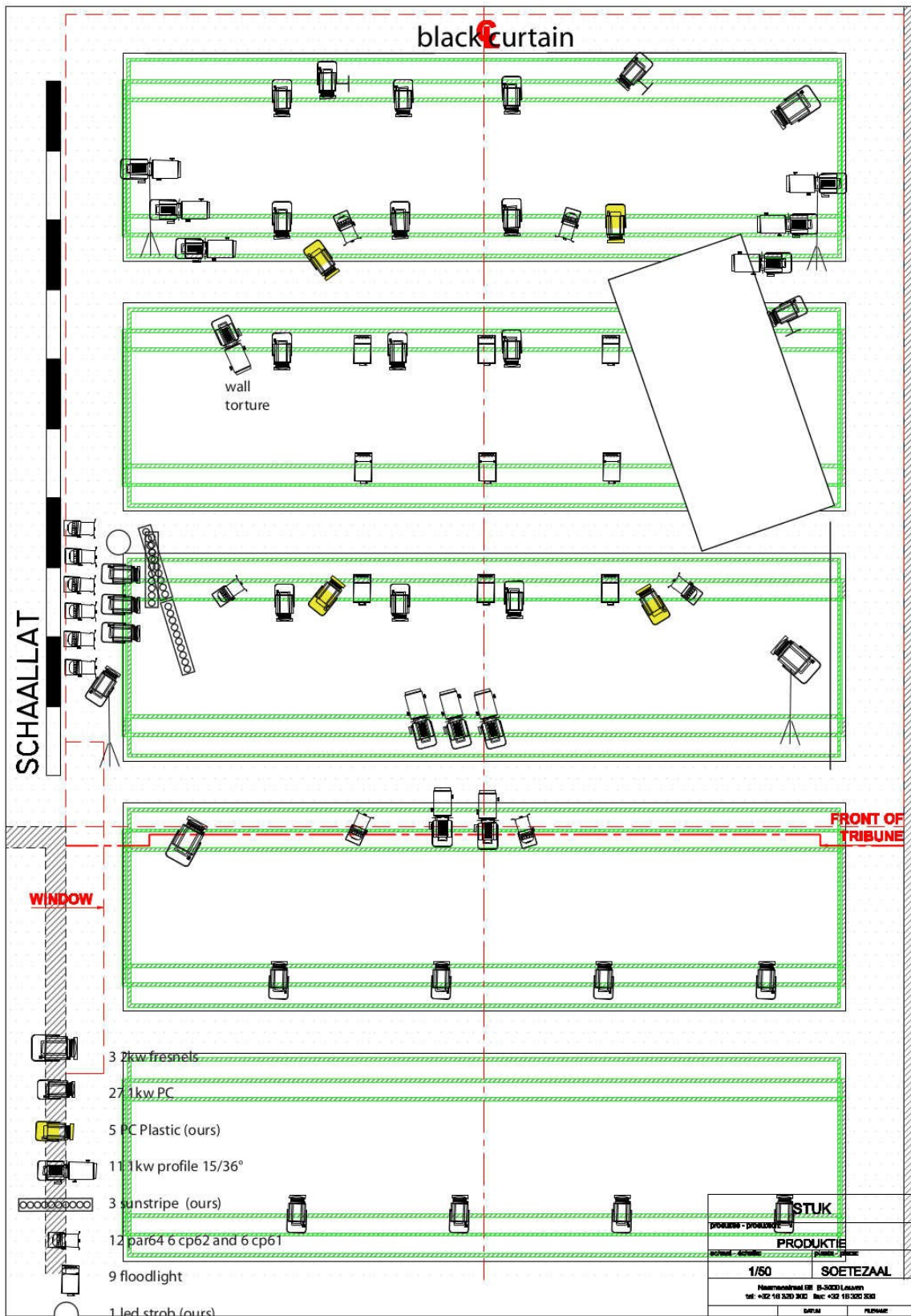
- 1 laptop + lan-box + Korg Nano-Control
- several stands
- 3 Showtec Sunstrip DMX
- 1 LED-Strobe
- 4 'fake' plastic PC spotlights, electrical cable & wires attached
- 1 electromagnet to attach (and drop) rope

To be provided by the organiser:

- 3 x 2kw fresnels
- 27 x 1kw PC
- 11 x 1kw profile 15/36°
- 12 x par64 (6 x cp62 and 6 x cp61)
- 9 x floodlight

- 58 dmx channels 2kw
- DMX cables
- Filters: 2x122 for Fresnels 2kw / 12x122+rosco114, 1x106, 1x139, 1x119 for PC 1kw / 6x203 1x106, 1x139, 1x119, 2x201+rosco119 for Profiles / 12x139 for par 64 / 9x203 for Floodlight

Picture below shows an example of implementation – a detailed implementation for each venue will be sent to the venue some time before the performance.



58 dmx channels 2kw

STUK	
PRODUKTIE	
1/50	SOETEZAAL
Neuenhofstrat 18, B-3002 Leuven	
tel: +32 16 320 300 fax: +32 16 320 330	
DATUM	PLANNING

TRAVEL & TRANSPORT

The team travels with 5 people.

Set, props and technical equipment are transported in a van. Please make sure the company can unload the van upon arrival, and please provide a parking-place for the van.